

# Maintain user productivity and reduce time and cost of PC refresh and migration projects

One of the most standard yet cumbersome tasks of an IT administrator is to provision or re-provision a workstation for an employee. Windows® OS migrations with PC replacement and upgrade projects are now commonplace as more and more IT organizations look to benefit from faster, and more reliable machines while minimizing impacts to worker productivity.

## Benefits

- Automatically preserve and migrate user personalities, reducing lost productivity time and service desk tickets while enhancing the user experience with refreshed or updated systems
- Seamlessly migrate a large number of systems to a new Windows OS without spending hours configuring Microsoft® USMT
- Refresh a single PC or several workstations at one time

- Is your organization coming up on a corporate-wide OS migration?
- Do you routinely rebuild user workstations when issues cannot be resolved in less than 10 or 20 minutes online with the Service Desk?
- Is your hardware coming up for a widespread refresh?

In any of these cases, once the OS is installed on the workstation, do you simply distribute to the end user or do you ensure that each user's new PC has the same look, feel and accessibility as their original machine, including their desktop preferences? Having a solution that automatically preserves and migrates user personalities is the key to end-user satisfaction and successful migration results, but is often a missing component in these types of projects. Maintaining user productivity and satisfaction levels should be a major consideration for all IT departments when embarking on PC change initiatives.

## Ease the administrative burden of PC change initiatives

PC change is inevitable, whether driven by the user or the company. Most PC updates are the result of:

- an upgrade to the latest and greatest OS
- new hardware replacement
- failure to timely and successfully troubleshoot system issues

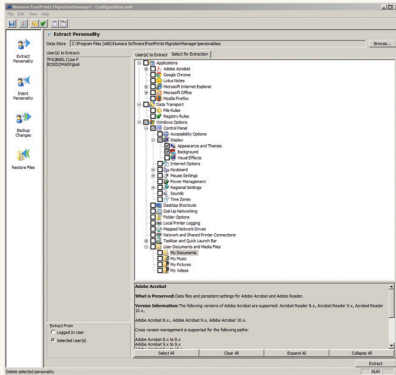
Regardless of the reason, these updates can be time consuming for IT administrators and often require significant manual and sometimes redundant effort for both IT and the user.

With Numara® FootPrints® Migration Manager, IT administrators can easily preserve their end users' unique personalities and keep them intact on refreshed or upgraded Windows PCs without manual intervention. End-user PC customizations are preserved, including: data files/structure, customized layout, web favorites, application settings, drive mappings, wallpaper, email signatures and more, maximizing productivity and reducing learning curves. FootPrints Migration Manager ensures a smooth, repeatable process that can be used to migrate a single user's machine as easily as a thousand machines. Furthermore, IT administrators can easily accomplish these projects with the added benefit of a GUI-based, automated solution that allows them to avoid complex command-line tools.

With FootPrints Migration Manager, you can avoid post-migration support calls and complaints about lost productivity because your users lost their personalized wallpaper or customized Microsoft Word dictionary. FootPrints Migration Manager makes application upgrades easier and more efficient by performing cross-version migration of application settings and data.

## Manage Windows OS deployments from A-Z

With the wave of organizations making the move to Windows 7, it is every IT department's ultimate goal to seamlessly migrate to the new OS while keeping costs at bay and user productivity levels high. An often overlooked element of a successful Windows OS migration is not only the imaging/re-imaging of each machine, but also the extraction and injection of user personalities following the OS deployment. FootPrints Migration Manager works hand-in-hand with any imaging software for OS and software deployments to ensure zero impact to the end user after the deployment is complete.



Quickly select what personality aspects you wish to extract for a single PC or a group. IT controls the path where data is stored for easy self-service functionality for backing up and restoring user state data.

## Automated deployment + personality migration

Looking for the complete OS Deployment Solution? With out-of-the-box integration with Numara FootPrints Deployment Manager you can have intelligent, reliable and comprehensive control required for an automated hardware refresh, PC replacement, Windows OS Deployment or application migration. This solution will reduce the cost, risk and labor typically associated with bulk distribution, bulk removal and required configuration changes.

## Leverage your existing investment

Using Microsoft's System Center Configuration Manager (SCCM) as the foundation of your Windows Operating System deployment? No problem. When used with the Microsoft Deployment Toolkit and Microsoft's SCCM, FootPrints Migration Manager can result in a 2-4 week reduction in the time required to configure a migration with Microsoft's User State Migration Tool (USMT). Together, the solutions enable fully-automated, bare-metal deployment for Windows Operating Systems and terminal servers.

## Features

- **Complement OSD:** Organizations who are using imaging software for OS and application deployment can use FootPrints Migration Manager hand-in-hand as part of the overall deployment process
- **Zero-touch migrations:** Define the source and target computer pairing for migrations in a mapping file with Injection Mapping
- **Updated content support:** support added for Acrobat® Reader and Acrobat Pro versions, Google® Chrome and Mozilla® Firefox and more
- **Agent-less Migration:** Allows for agent-less migration with no install/uninstall of FootPrints Migration Manager on the client
- **Leverage SCCM:** Complement Microsoft's System Center Configuration Manager by automating the user state migration process and eliminating the use of USMT
- **Encryption Option:** Encrypt user states in their temporary locations and restore on the new system by entering a password
- **Storage Policy:** Allows IT policy creators to decide which data files to retain, and where those files will be stored in order to standardize the environment and decrease support costs
- **User Interface:** Eliminate the need for command-line parameters and easily configure your user state migrations from an intuitive interface
- **Cross-Version Migration:** Migrate application settings across versions during software upgrades including Microsoft Office as well as Non- Microsoft applications

## The freedom to simply...choose

FootPrints Migration Manager is a part of a family of IT Operations Management (ITOM) Solutions. Each FootPrints product automates and streamlines a specific IT challenge to help you reduce costs and improve service levels. Built from the ground up as a modular, yet integrated system, the ITOM family of technologies provides a single, unified solution to simplify a diverse set of complex client lifecycle and service management needs.

## Imagine...having the choice to:

- Decide which components or products are relevant to your business
- Manage various platforms from one console
- Invest in one point product, a solution set of multiple products, or the entire suite
- Buy what you need, and not what the vendor dictates

For more information on the minimum requirements necessary to use FootPrints Migration Manager, please refer to our Technical Specifications document available online.

### FootPrints family

- FP Incident&ProblemManager
- FP ChangeManager
- FP ConfigurationManager
- FP ServiceCatalogManager
- FP InventoryManager
- FP RemoteManager
- FP DeploymentManager
- FP PatchManager
- FP DeviceManager
- FP VulnerabilityManager
- FP ComplianceManager
- FP PowerManager
- FP MigrationManager**